

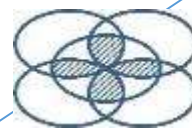
Resolving the Drought Puzzle in the Drylands of Kenya

Floods for Pasture: Enhancing Pastoralists well-being

Elly Arukulem Yaluk

Department of Land Reclamation
Ministry of Water & irrigation, Kenya

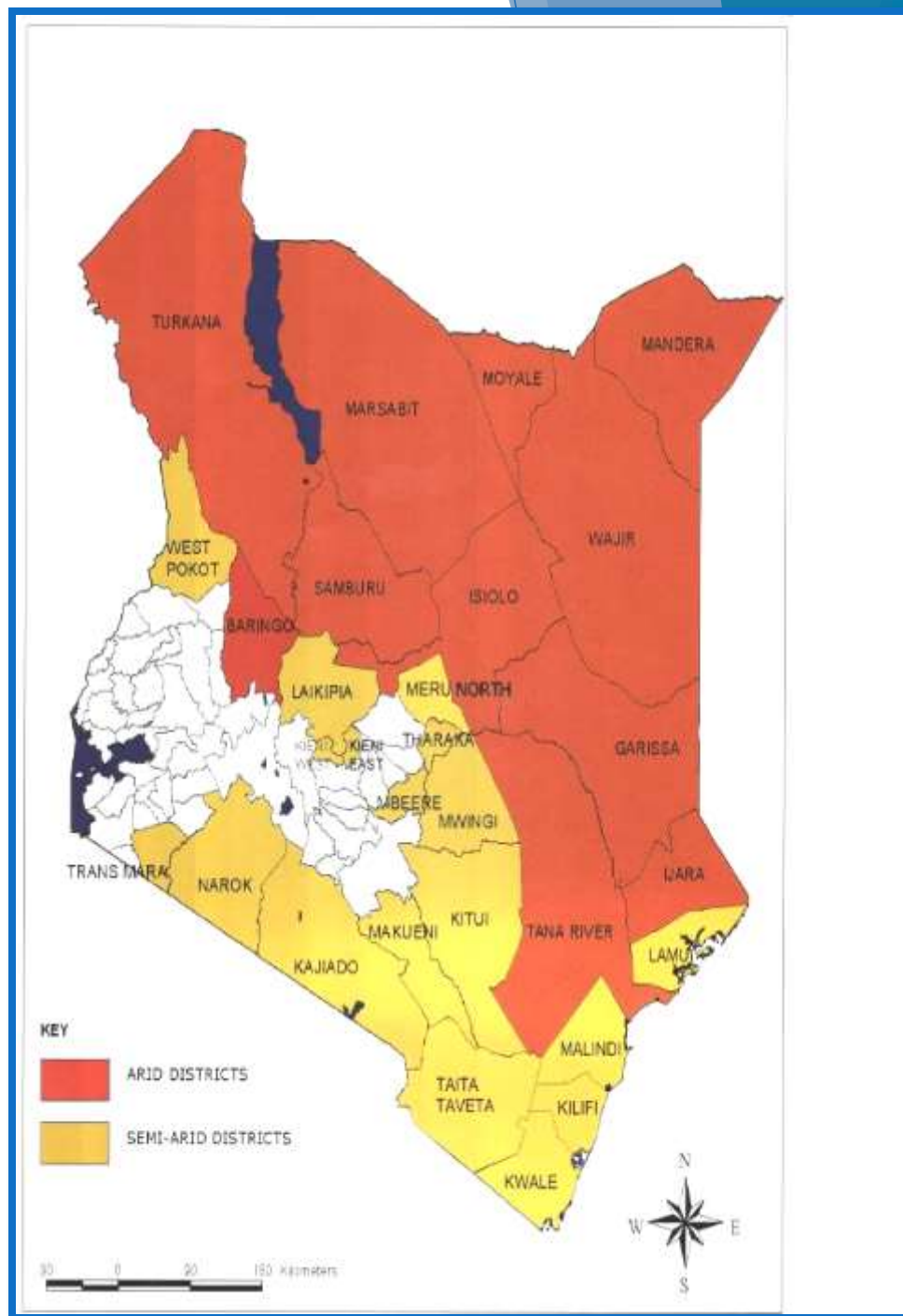
Flood-based Livelihoods Leadership Course
16th May, 2017



Flood-Based Livelihoods
Network Foundation

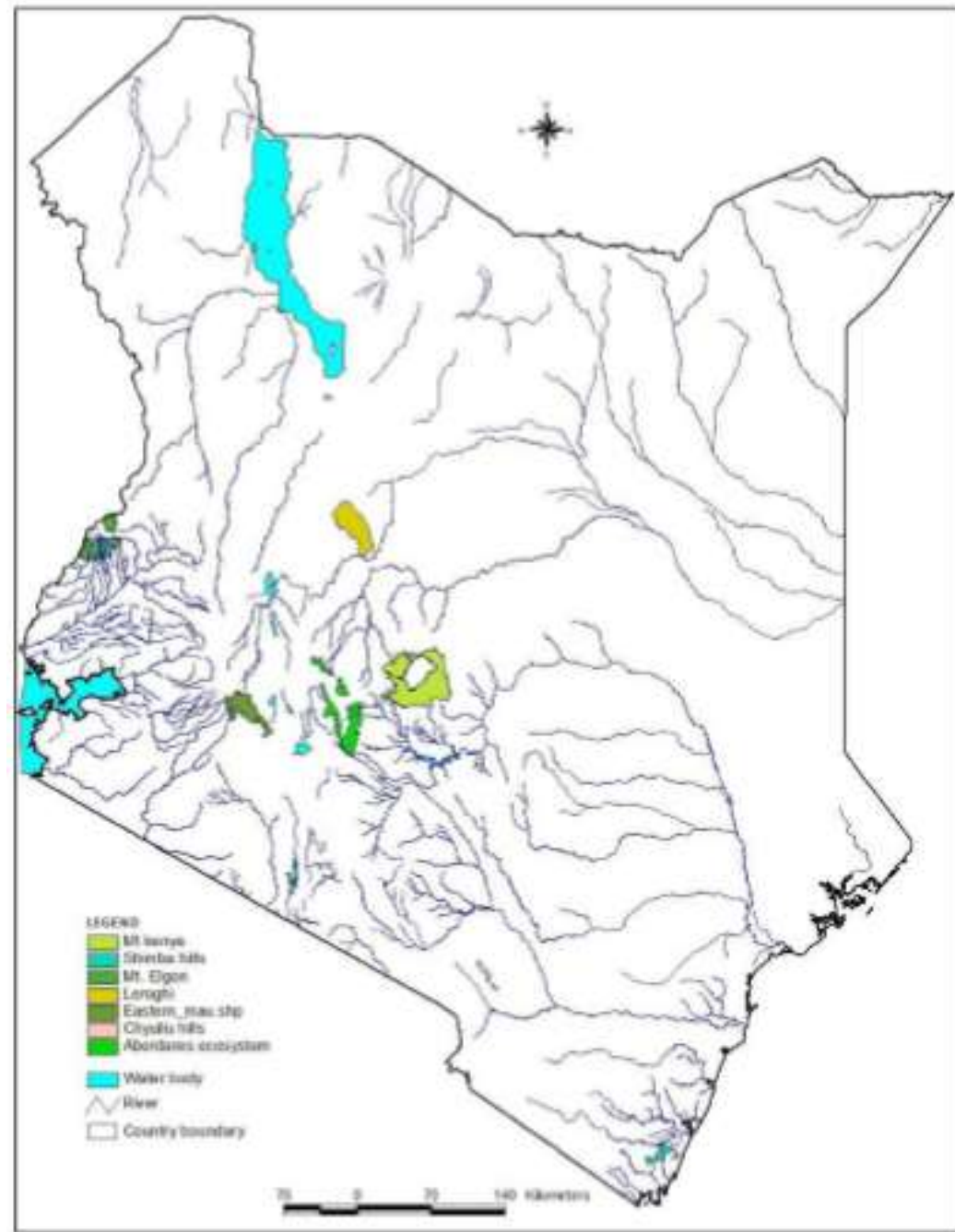
Overview of Kenya's Drylands

- 47th largest country=580,367KM² (89% ASAL);
- 47 Million people (about 30% in ASAL)...70% livestock population; 90% wildlife
- 47 devolved county governments
- Average rainfall is 630mm! (ASAL av. 495mm)=24BM³



No water scarcity...

- Poorly distributed & unmapped (ground water; ungauged ephemeral streams)



1990 (12%)

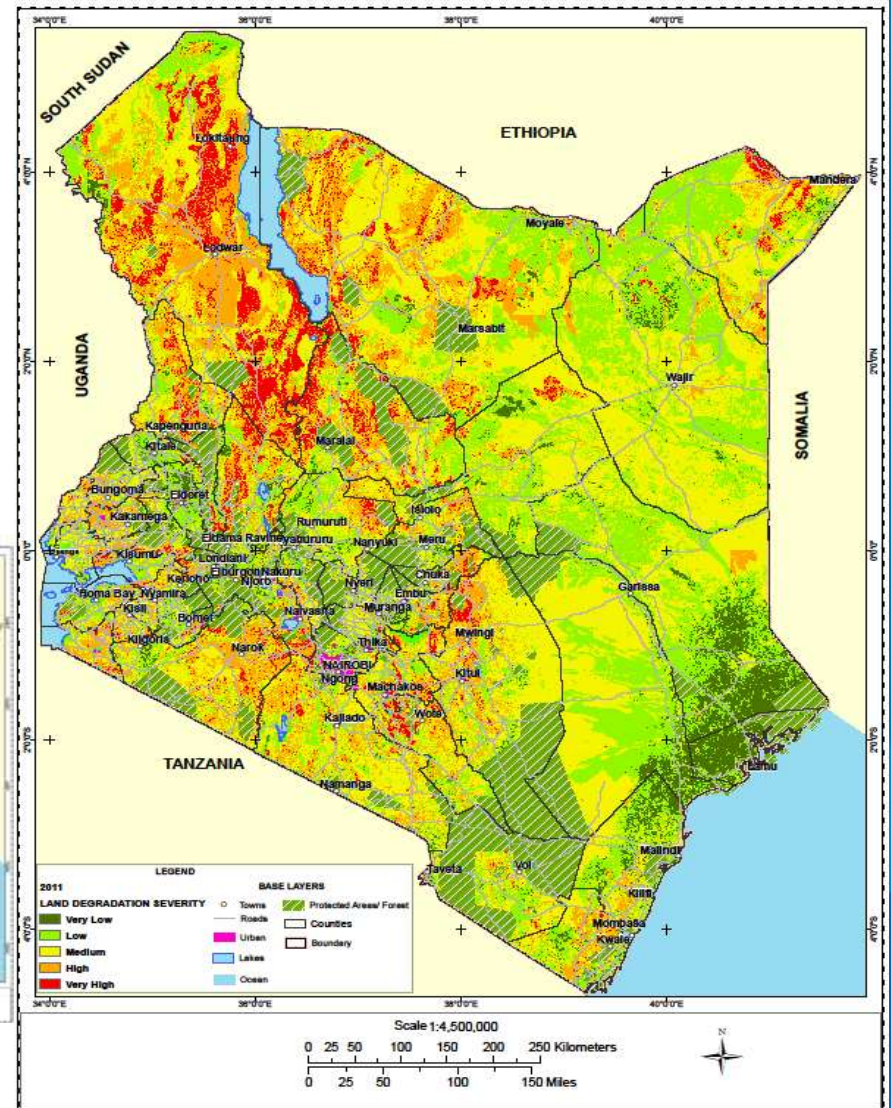
Land degradation in Words...

2012 (28.3%)

2000 (24.1%)

2005 (24.3%)

2010 (24.9%)



Land Degradation in Figures...

- 3% loss to GDP annually...390 million USD.



The origin of the problems...



Water Waste...



- 67% (>15BILLION M³) lost within 21 days after the rains.

Drought & Floods

- ▶ Drought every 2 years: 7 in 1980s; 10 in 1990s
- ▶ Longer dry spells & heavier storms
- ▶ Floods occur in drought prone areas



Water scarcity...



Food scarcity

...



Livelihoods in the ASALs



Pasture/Fodder in W.Pokot...







LESSONS FROM W.P LRD

Benefits:

- Harvesting seeds and sold and also reseedling
- The grass harvested and stocked for drought periods
- Sales: to maintain farm and water harvesting structures; to improve living standard



Opportunities?...

- ▶ Mapping ground water and all surface water
 - ▶ Roads as an alternative drainage system
 - ▶ Dryland Watershed management approach
 - ▶ Weak Farmer/Pastoralist groups
 - ▶ Existing network with ASAL county governments
 - ▶ Land reclamation schemes for pasture
-
- ▶ <http://www.thewaterchannel.tv/media-gallery/2902-pastoralism-in-africa-doing-things-differently>