

Groundwater use in floodplains



Berry van den Pol – PRACTICA Foundation



Floodplains: High potential.. Marginal use



Shallow + rechargable groundwater

Fertile alluvial soils

Conventional wells collapse



Need for yearly renewal or rehabilitation

Time and space consuming

Reinforcement is costly



Stones, tyres, wooden structures

Difficult for large depths: limiting yield

The tested alternative: Flood wells



Manually drilled tube well

Capped during inundation

Mobile pump-set to irrigate in dry season



PRACTICA
FOUNDATION

The tested alternative: Flood wells

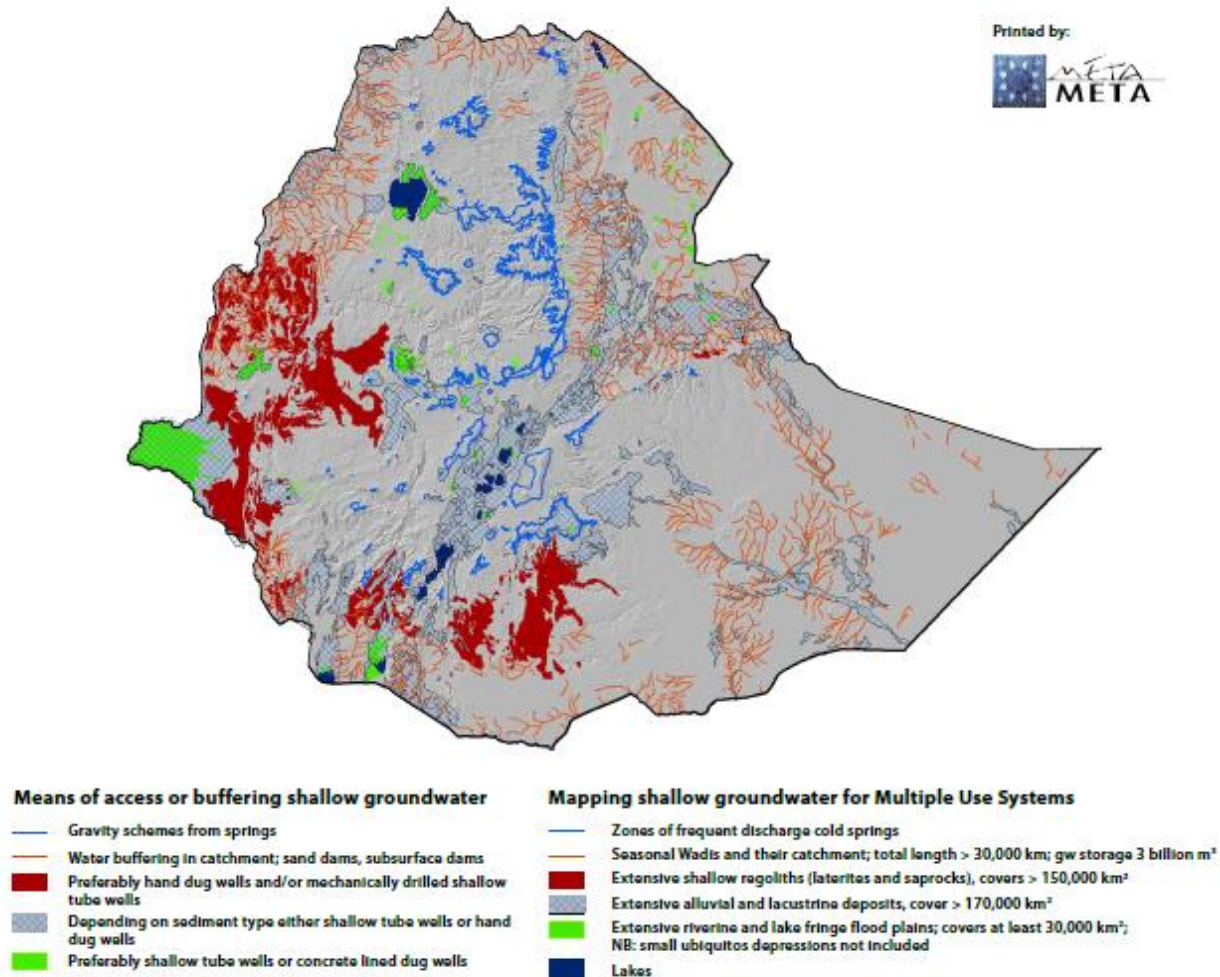


Private water access

To increase productivity

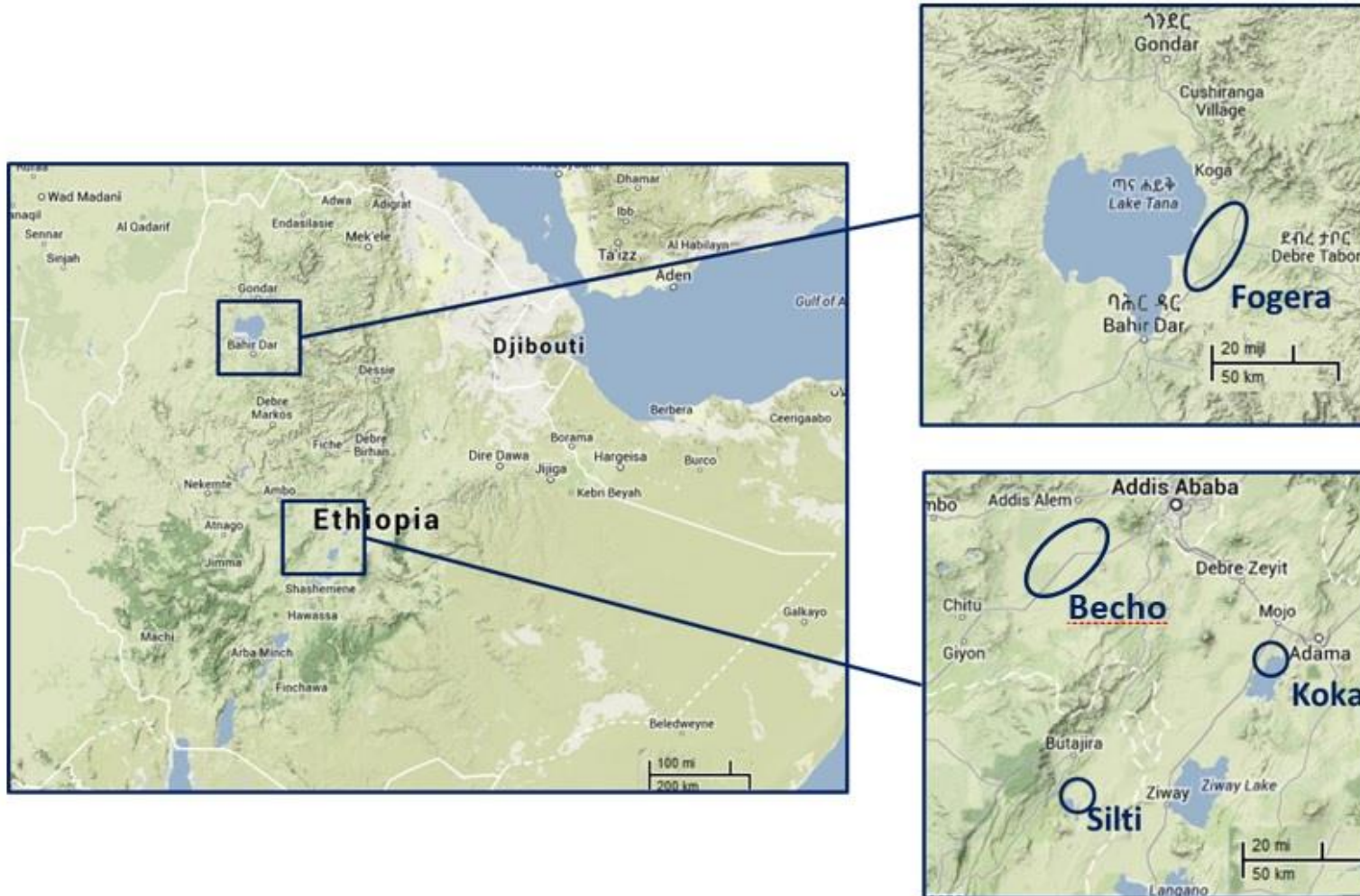
PRACTICA
FOUNDATION

The project approach



1. Mapping
2. Farmer consultation
3. Pilot drilling

The approach



1. Mapping
2. Farmer consultation
3. Pilot drilling

The approach



1. Mapping
2. **Farmer consultation**
3. Pilot drilling

PRACTICA
FOUNDATION

The approach

1. Mapping
2. Farmer consultation
3. **Pilot drilling**

PRACTICA
FOUNDATION





The approach

1. Mapping
2. Farmer consultation
3. **Pilot drilling**

PRACTICA
FOUNDATION



The approach



1. Mapping
2. Farmer consultation
3. **Pilot drilling**

PRACTICA
FOUNDATION

Potential and lessons learnt



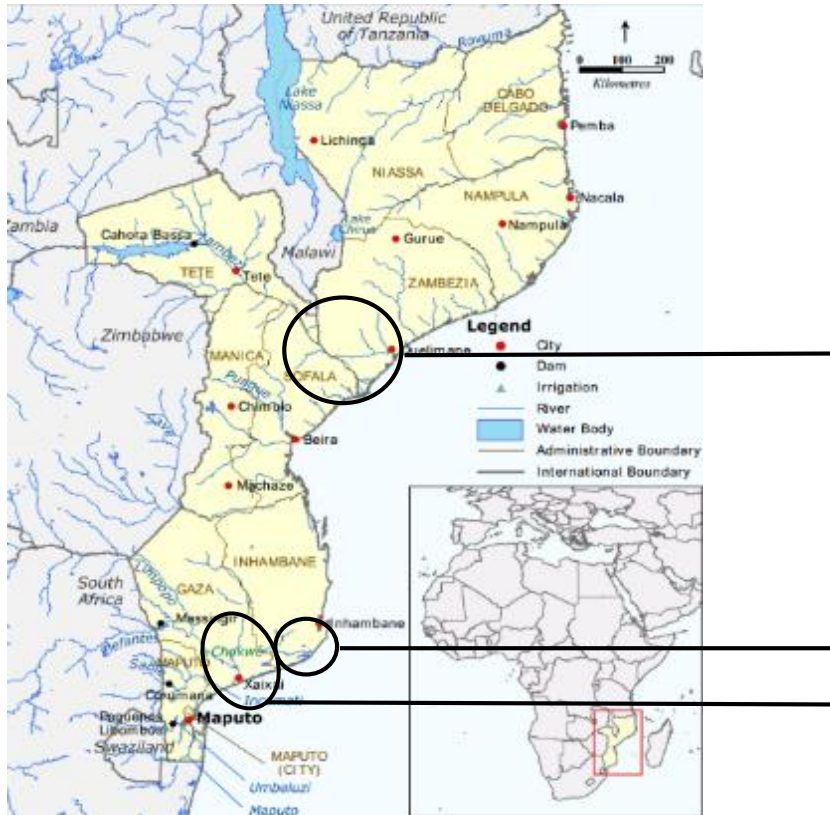
Ethiopia: scope in Becho and Fogera

High potential if:

- Riverine floodplains
- Smallholder irrigation
- Market access

Large scope identified in...

Mozambique

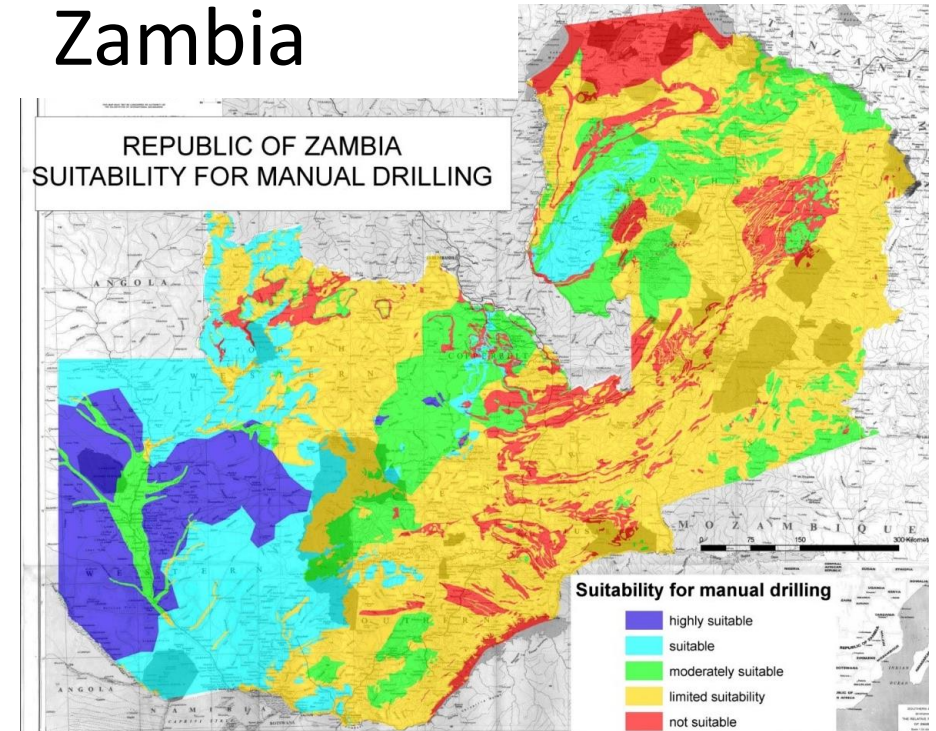


Lower Zambezi

Inharrime

Lower Limpopo

Zambia



PRACTICA
FOUNDATION

Upscaling flood wells



Train local drilling teams
and workshops

Strengthen pump supply
and maintenance networks

Promotion and
micro-finance

PRACTICA
FOUNDATION

But: floodplains are patchworks



Need to introduce a range of solutions to deal with highly variable nature:

wet/ dry / grazing land /
irrigation / fisheries / clay /
sand / rice / vegetables /
private /communal land / etc.
etc.

PRACTICA
FOUNDATION